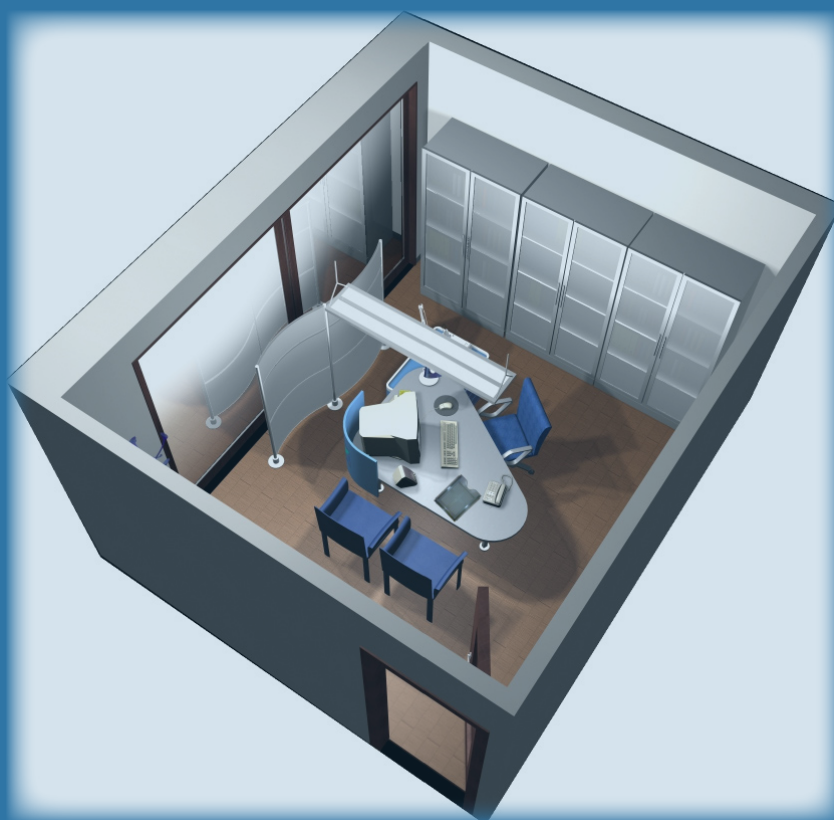


# SMART-OFFICE



**RAILS<sup>TM</sup>**  
ASRS/Automated Storage & Retrieval Systems

**RAILS** divisione di HABITAT ITALIANA  
Brescia - Milan - London - Dubai - Seattle  
[www.rails-asrs.it](http://www.rails-asrs.it) [info@rails-asrs.it](mailto:info@rails-asrs.it)



#### A Component of Mode 2 Smart Document Tracking

##### SFC Smart Filing Cabinet

SFC is a standard wooden filing cabinet in which files can be immediately traced in whichever cabinet they are stored. This is achieved by means of Magellan PJM StackTag which are fixed to each file. SFC looks like a normal filing cabinet with two double doors. No part of the electronic circuitry can be seen from the outside. The picture shows half of the cabinet.

Behind the rear partition, there is a false button which has a depth of 14cm, in which the reading antennas are located together with the Magellan reader MARS-24.

The SFC is equipped with a micro switch which senses the door position to keep the MARS-24 reader idle, as long as the cabinet door is closed. An optional electric lock, operated by an RFID badge, insures that no unauthorised person can access the cabinet.

Should the folders have an identification PJM StackTag as well, it is then possible to trace immediately not only the shelf on which a certain file is positioned, but visually identifies the correct folder

as well.

SFC is connected to the company network preferably by means of an Internet link. The intelligent Magellan Document Trays can be connected to the same network, which allowing to trace any document, or even folders in whichever office it is. This creates a unique unrivalled system in documentation tracking.

In addition, mode2 offers a complete Document Tracking Software which can be interconnected to any ERP system, allowing any operator system to have complete visibility, not only of the data, but also of the file location and its composition - To mention but one example, this could be of extreme importance for the CRM operators.



This complete and integrated solution is particularly useful for Public Administration, banks, insurance companies, mortgage

issuing institutes and wherever the paper file contains precious information which cannot be archived electronically, and were the temporary loss off any one file causes problems and costs.

#### Function

The reader, CE (compliant and emitting) has an extremely low emission level. It remains idle most of the time, and is operated for a few seconds only after each time the doors are closed. A proximity sensor operates the reader again for a few seconds if anyone comes very close to it with a badge wishing to access the cabinet. Once the operations (with open doors) are terminated and the doors are shut, the reader starts reading again for the shortest time necessary, a few seconds only, to make a new inventory of the complete content of the Intelligent Filing Cabinet.



Medicinal version closet for pharmacies.

#### Features and interfaces

The cabinet is made of laminated oak melamine, multiplayer poplar and oak MDS. It is composed of two identical parts, each one with two half doors which operate one micro-switch.

On demand, it is possible to equip the doors with electric RFID badge operated locks.

On the inside, there are five shelves divided by a central support partition. Each shelf has a length of approx. 86cm, and is original Magellan two axis antennas, allowing to track a single file on each self.



Dimensions: L 180 X H 210 D 45 CM

Reader: MARS-24 each one controlling 24 antennas and 81/0

Antennas; 2 axis antennas fitted behind the rear partition wall in false bottom +1 small circular antenna fitted inside one of the shelves for badge operated door opening if required

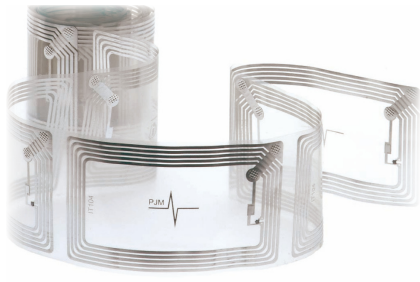
CE norms: All Magellan products are CE complaint

Interface: Ethernet or USB2. The connection to existing systems is quite simple. All Magellan readers are Linux based.

Tags: Magellan PJM StackTag have to be used in the SFC

Drivers: A driver for Oracle Application Server can be delivered free if required

If required, mode 2 can, through her parent company SAIT, connect the SFC to an existing document tracking software or alternative delivery of a complete document tracking solution based on standard software, and connect this latter to any existing ERP system.



#### Tagging and file capacity

Each file has to be tagged with a Magellan PJM StackTag. All tags can be put in the same position on the cover of the file or on the first paper sheet. It is possible to utilize pre-printed A4 paper sheets which already contain one Magellan PJM StackTag.

The binder may also be tagged to make identification easier on the shelf.

The number of folders the SFC can contain depends on their dimension. Typical 100 oxford type folders have a back of 8,5 cm.

Each folder contains 15 to 20 tagged files, allowing to archive 1.500 to 2.00 tagged files in one SFC. The time necessary to read all these tags is a matter of seconds.

Should there be a necessity to store many more files closely stacked to each other, even in direct contact, it is possible with Magellan technology by using a different kind of PJM StackTag than used normally for these applications.

The Magellan Document Tray Reader together with the Smart Filing Cabinet make a complete Smart Document Tracking System. Put on desks in different offices, they allow to always know where certain files are, in which

step of the process it is, and who is working on it.

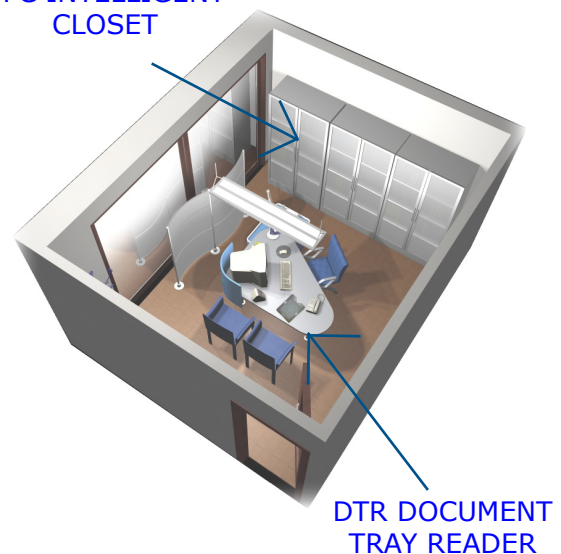
#### About Magellan

Magellan Technology is a technology developer, manufacturer and licensor of advanced reading and writing 1P.56MHz RFID systems. They design and offer RFID chips, inlets and a complete reader portfolio for our Phase Jitter Modulation (PJM technology) which complies the International Standard ISO/IEC 18000 Part P Mode 2.

<http://www.magellan-rfid.com>.

## SMART OFFICE

#### SFC INTELLIGENT CLOSET



**RAILS** divisione di HABITAT ITALIANA  
Via Serenissima 7 - 25135 Brescia - ITALY  
tel. +39.030.23.50.081  
fax. +39.030.33.63.050  
[www.habitatitaliana.it](http://www.habitatitaliana.it)



# D E S C R I Z I O N E

RAILS



# D E S C R I Z I O N E

RAILS